

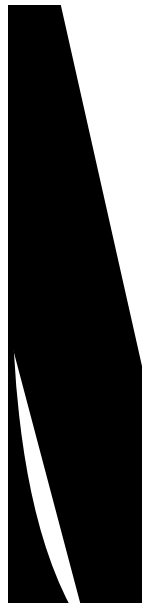
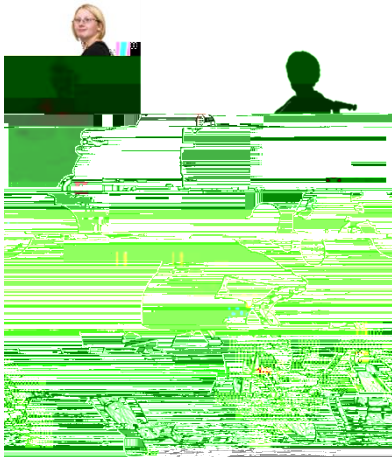
: KDW LV 6SDFHV IRU 3H

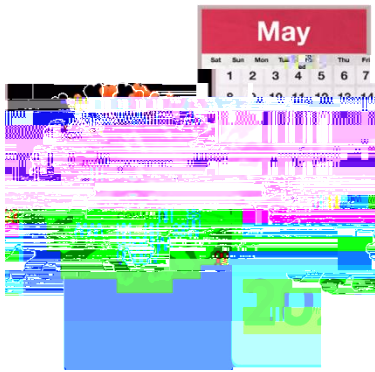
6SDFHV IRU ~~DRBOM~~ LWK
*RYHUQ~~BHQ~~ WUDPPH

6SDFHV IRUZ~~BWR~~ ~~SW~~ ~~DU~~ W~~F~~
SHRSOH WUDYHO VDIHO
SDQGHPLF

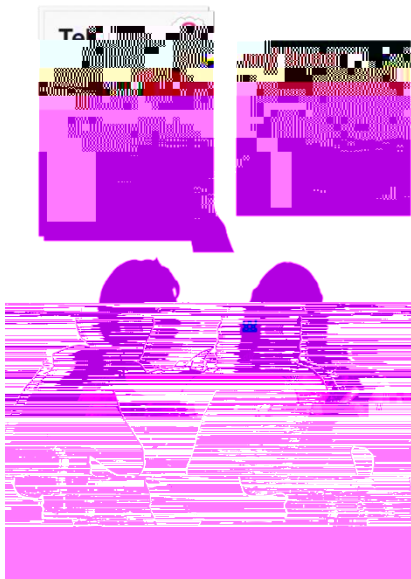
7K~~H~~ FRWWLVK *RYHUQPH
PLOLRQ SRXQGV WR G
RUJDQLVDWLRQV DQG V

7KH RUJDQLVDWLRQV DQ





6XVWUDQV BBRVGDNDKQG
6SDFHV IRU 3HRSOH SUI
,WWDUWHG\ EHFDXWHKR
&29,' SDQGHPLF



7KLV UH\$R\QWRUPDWLRQ

VXUYH\VOE\GSLQR SOI
DFURVV 6FRWODQG

D VPDOO IRFXV JURX

7KLV UHSRUW VKRZV KR
FKDQJ\RGZ SHRSOH WUDY
DUHDV

'LVDELOLW\



MVW RYR\ERK\OVDEOHC
DQG GR\ODEOHGW\RSK
6SDFHV IRU 3HRS\RU
ZHOO



KD\RII GLVDEOHG SHRS\O
6SDFHV IRU 3HRS\KRPX
EH NHSW LQ WKH IXWX



O H W K D Q R K D G L I V D E O H G
W K H 6 S D F 0 • 0 `



7KH VXUYH\ UHVXOWV V
SHR SOH KDG PL[HG IHHO
6SDFHV IRU 3HR SOH

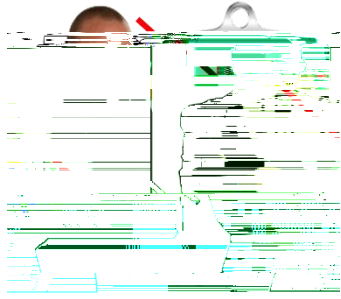
6RPHGLVDEOHGHSHWRSODJ
KDG PRUEDRGPDDFW RQ V
RWKHU SHR SOH



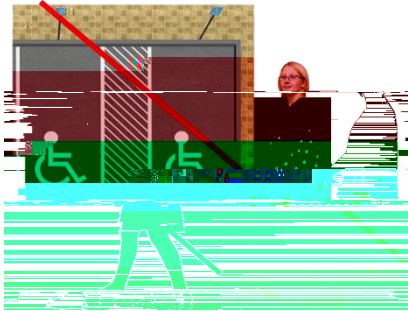
\$ VPDOORJGIRVDEOHGJDSYH
PRUH LQIRUPDZKIDRQVDEH
WKRXJKW



7KWKH SHR SOHIRLFQWVWUF
KDEDB[SHULHQFH

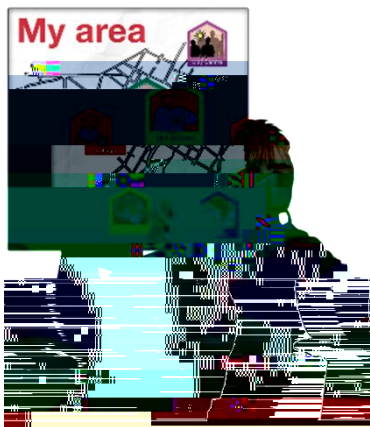


W K S H U R M G I E O R W W W K L Q N
D E R X W G Z L K M D V E O H G Q S H B



W K F H F O E Q D Q J P H V G H L W F
G L I I L F X O W W W R S S D S U H N G D
J H W W L Q J D E R X W

/ R Z , Q F R P H \$ U H D V



7 K H U H Z H U G S D R H W I R U 3
P H D V X U G H F R M Q D Q G H V S P R
D U H D V

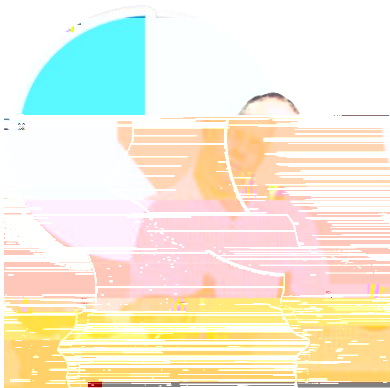
\$ G H S U L D Y H G D L V R Q H Z K
S H R S O H W K D W O L Y H W K

H Q R X J K P R Q H \

F K R L E Q V H G X F D W L R Q F
D Q G K F D O M K

L Q 6 S D F H V I S W R M Z F S
L Q W K P R V G H S U L Y H G Q D W K D
F R X Q W U \

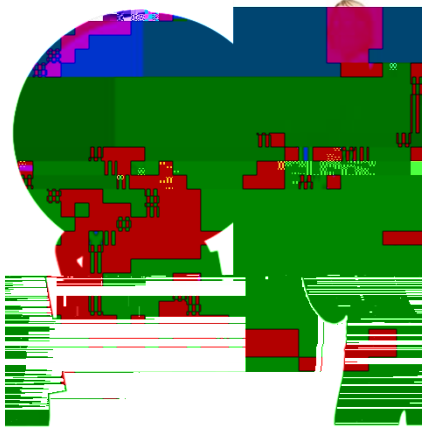
PRUH WKDQ SHDROH ZK
ORZ LQZBQW KH 6SDFH
3HRSPHDVXWRVHHSW LC



PRUH WKDQ WZSHWZLQ
KDYHDLZQFRPH IRXQG
3HRSOH PHDVXUHV KH

*HQQHU

QHDUO\ WkuHH TXDUW



MXVW RYIRZKFDHQQDLG WK
VDIHU ZDONLQJEDGEXA
WKSDFHV IRU 3HRSOH

MXVW XQGHZRPVQGLUE
GLG QRW IHHO GLIIHU

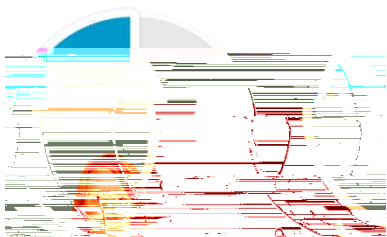
\$ J H

—

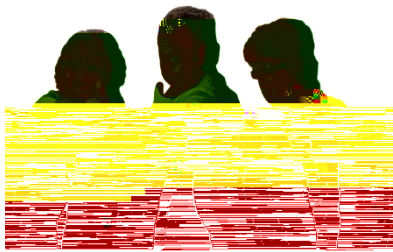
PRVW \HDUV @LONVGH
6SDFHV IRUPHHR/SXOHHV



PRVSHRSDJHGRU RØHNH
WKH 6SDFHV IRU 3HRS



PRVW SHRSDJHH LQJ RDXSOV
ZDQWHBHVQKXWEM PDGI
SHUPDQHQQW



DOO DJH JUR XFSKD QHZHWJ
KHOSIXO

\RXQJHU SHRSOH ZHUH
DERXW WKHP WKDQ RC