



**Time needed:**

15-20 minutes



**Resources needed:**

The street scene image  
(or A4 copies for pupils,  
available in colour and  
black and white)

Conversation Starter  
– Teacher Prompt



**Solo/group activity:**

Both



**Curriculum links**

Understanding  
the world (Eng)

World around us (NI)

Social studies (Scot)

Humanities (Wales)

---







Numbers and counting

How many?.....

% LF\FOHV FDUV ÁRZHUV F\FOLVWV  
windows, rain drops, shops

Shapes

Windows, tyres, zebra crossing

VWULSHV VXQ WUDIÀF OLJKWV

Colours

Knowledge of the world

There are two shops (Florist, bakers)

What other shops might we see in a town?

b9 rg /5<</Lang (en-GB)/MCID 73 >>BDC BT 0.161 05-08CID cCo33o/MC who has lefCID cirDC E





Each pupil starts in a space, they pretend to put on their helmets and then pick up their pretend handle bars by holding a tube of paper (or similar) in each hand as if holding bicycle handle bars.

Ask them to climb onto their imaginary bicycle and set off slowly around the play space. Encourage them to weave in and out of others without bumping, by looking for a space to move into.

When ready introduce instructions:

# Bling your bike

## Objective

Reimagine your cycle.

## Activity outline

Each pupil picks a template for a cycle.

Students can use pencils, glitter, ribbons, coloured card, recycled materials such as magazines or anything else colourful they can collect to make a collage or a decorated cycle.

## Inspired by:

Six-week step-by-step guide — a guide designed for teachers, parents and governors to help get more people active on the journey to and from school.

Additional information from Wheels for Wellbeing [wheelsforwellbeing.org.uk](https://wheelsforwellbeing.org.uk)



Time needed:  
20-30 minutes



Resources needed:  
Coloured pencils, pens  
Printed cycle templates or paper  
Bling / recycled materials (optional)



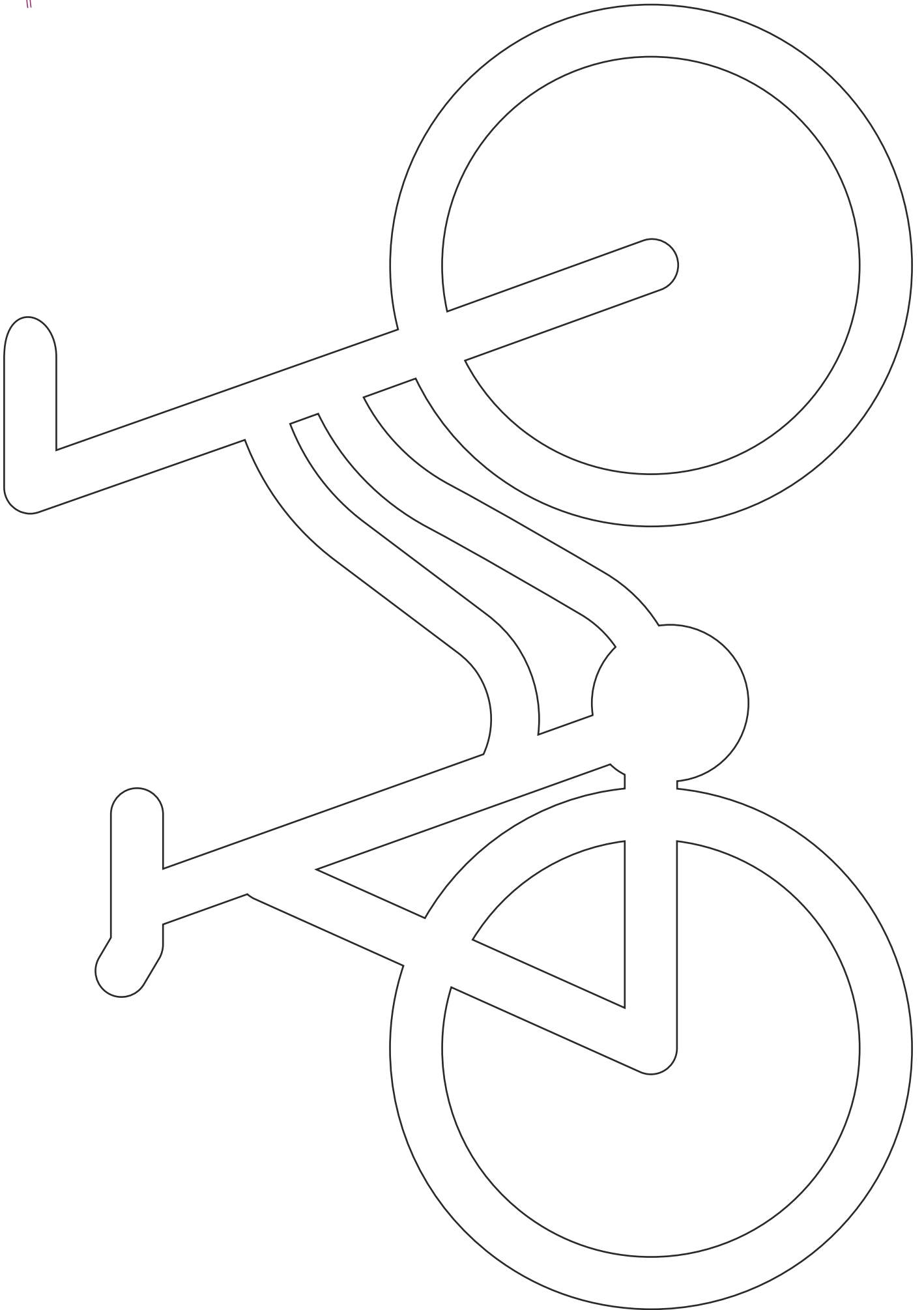
Solo/group activity:  
Both



Curriculum links  
Art and design (Eng/NI)  
Expressive arts –  
Art & Design (Scot)  
Expressive Arts (Wales)



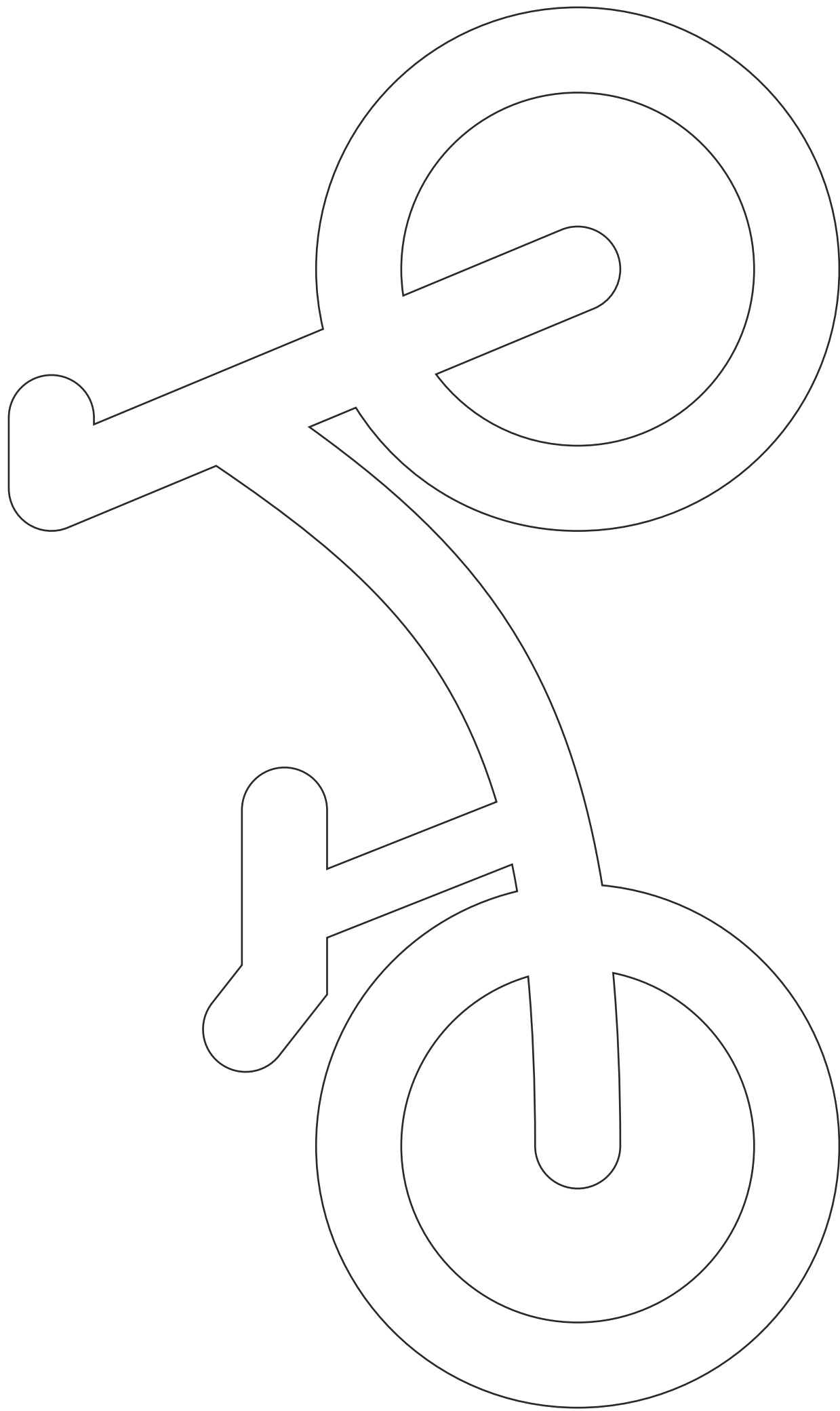














**Time needed:**  
15-20 minutes



**Resources needed:**  
Paper/card to create collage  
on (size to suit the group)  
Magazines, newspapers,  
pictures, fabrics, wool etc,  
Sticky tape or craft glue  
Bicycle Collage Template  
(if using)



**Solo/group activity:**  
Both



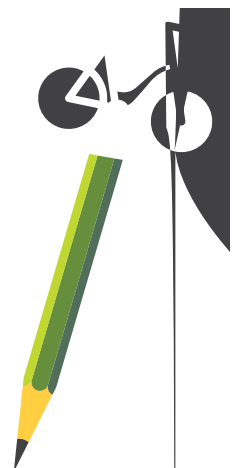






## Magic bicycle template

Cut out onto card and secure to tops of pencils to create Magic Bicycle-Pencils







### Our Bicycle journey through the Amazon Rain Forest

Today we are going to cycle through the Amazon Rain Forest in Brazil.

,W·V D KRW DQG ZHW MXQJOH IXOO RI WDOO WUHHV ZKLFK I  
over the jungle known as a canopy (like a tent). When it rains it can  
take 10 minute for the rain to hit the ground!

It can also be quite dark so we need to cycle carefully so that  
we stick to the path.

/HW·V JR F\FOH VORZO\ DQG \RX PD\ VHH PRQNH\V MDJXDUV  
or even deadly dart frogs!

When we get to the river, we need to extra careful as we  
balance on a log and cycle to the other side – Phew!

1RZ OHW·V ÀQLVK RXU MRXUQH\ DQG VHH KRZ ZHOO ZH VWXF  
the path in the beautiful Amazon Rain Forest in Brazil.

### Our bicycle journey through the city of London

We are going to cycle through the city of London, the capital of England.

/HW·V VWDUW

Follow the road carefully until we get to the bottom, we are next

WR 7KH /RQGRQ (\H <sup>2</sup> LW·V KXJH

/HW·V JR DJDLQ F\FOH XS WKH URDG DQG URXQG WKH FRUQ  
stick to the road at all times.

When you get to the bottom of this road, cycle carefully round the sharp  
corner, you can see Big Ben and Westminster Abbey on the other side.

/HW·V NHHS JRLQJ DORQJ WKL V URDG WKURXJK WKH FHQWU

We will cycle over the river Thames, and when we pass the  
Tower of London we will nearly be at the end.

Well done – we made it! How well did you stick to the road?

Across the world  
bicycle journey sheet

